



EMu Documentation

Thesaurus Browse View & Hierarchy View tab

Document Version 1

EMu 5.0

EMu
Museum
Management
System



KE Software

An AXIELL Group Company

emu.axiell.com

© 2015 All rights reserved

Contents

SECTION 1	Browse View	1
	The primary selection	3
	Browse View right-click menu options	4
	View menu options	8
SECTION 2	Hierarchy View tab	11
	Hierarchy View right-click menu options	12
	Index	15

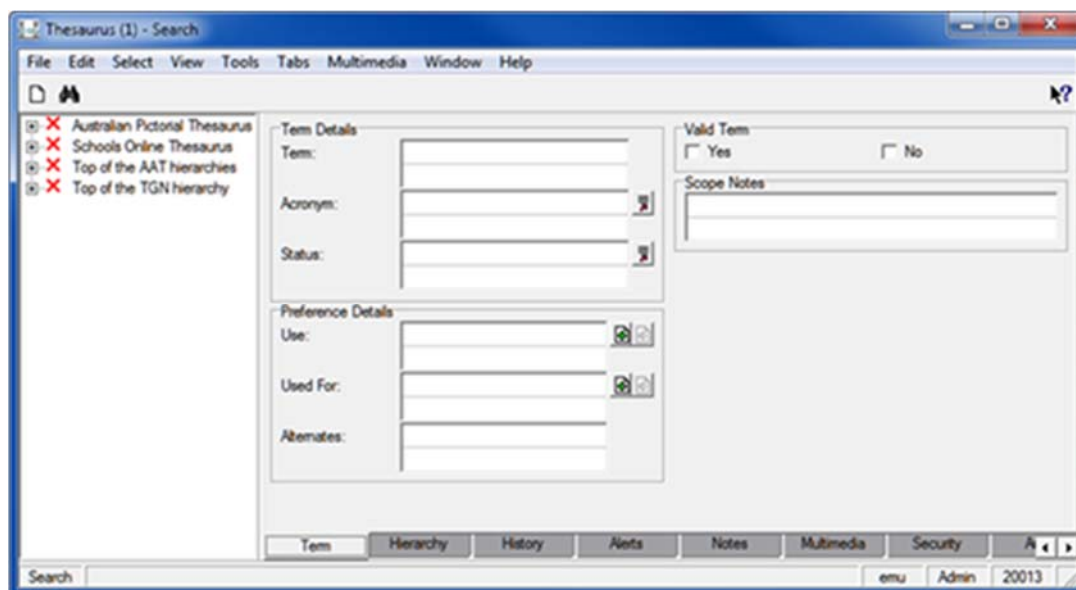
SECTION 1

Browse View

Browse View mode in the EMu Thesaurus module provides a hierarchical view of all loaded thesauri. It interacts seamlessly with other modes (Search, Display and Edit), views (List, Contact Sheet, Page and Details), and with the Hierarchy View tab (page 11).

Browse View mode is enabled by selecting **View>Browse View** from the Thesaurus module Menu bar. When the system is set to display a left-to-right language, the Browse View panel displays to the left of the main Thesaurus module window (as below); in a system displaying a right-to-left language (e.g. Arabic), the panel displays to the right of the main Thesaurus module window.

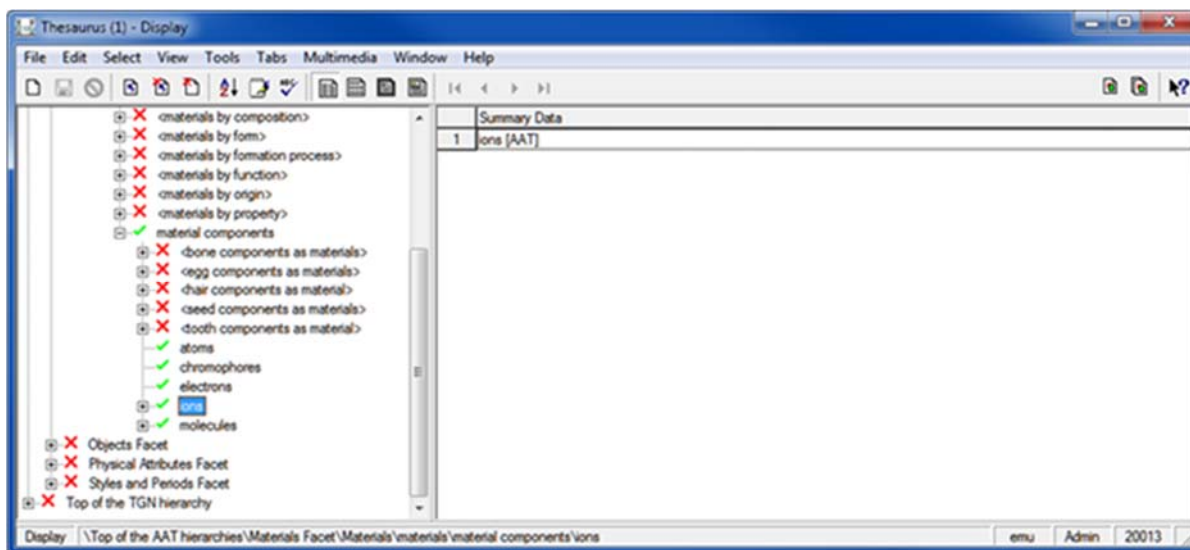
By default, the Browse View will show the top-level terms for all available thesauri when Browse View is enabled. In this example, four thesauri are available:



Users are able to navigate the thesaurus hierarchy by selecting the plus symbol (+) beside a term to reveal the next level of child terms, and so on. Terms without the plus symbol do not have any child terms.

The green tick (✓) and red cross (✗) indicate a term's validity as specified by the **Valid Term** options on the Term tab. Terms with a green tick have a *Valid Term* value of *Yes*, those with a red cross have a *Valid Term* value of *No*.

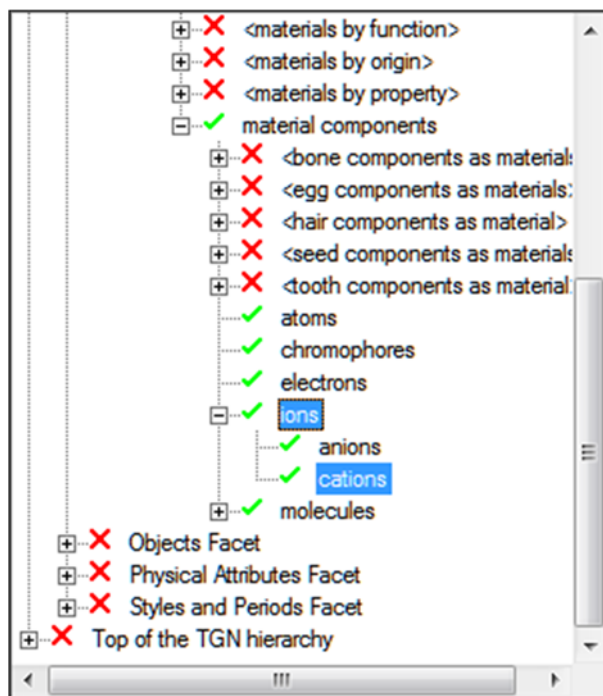
Selecting a term in the Browse View panel displays its record in the main Thesaurus module window using the currently selected display view (e.g. List, Details, etc.). If EMu is in Search mode when a term is selected, the system will automatically shift to Display mode. In this example, selecting the **ions** term shifts us from Search to Display mode and displays the **ions** record in List View:



Multiple terms can be selected using the Control (^) or Shift (⇧) keys while clicking with the mouse. The Control key allows multiple individual terms to be selected (or deselected) anywhere. The Shift key allows all of the terms between two terms to be selected.

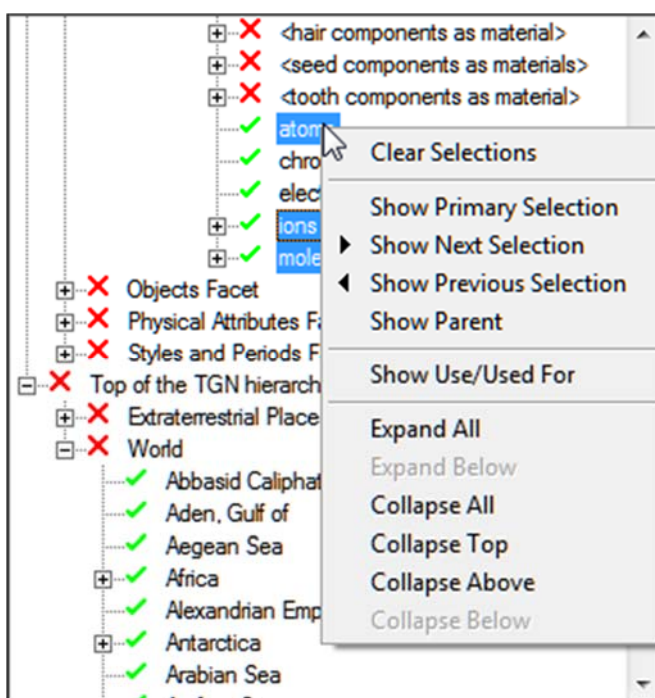
The primary selection

It is possible to select one or more terms in the Browse View (page 4) and on the Hierarchy View tab (page 11). The term that was last selected is called the *primary selection*. You can identify the *primary selection* by its dotted border. In this example two terms have been selected in Browse View, *ions* and *cations*, and *ions* is the *primary selection* term:



Browse View right-click menu options

Right-click the Browse View to display a menu with options for interacting with a term and, more generally, the hierarchy. In this example the `atoms` term has been right-clicked to display the menu:



If an option is grayed out, it is not currently valid.

It is not necessary to click a specific term in order to access the Browse View menu (you can click anywhere in the Browse View to access the menu); however some options are only valid when right-clicking a term.

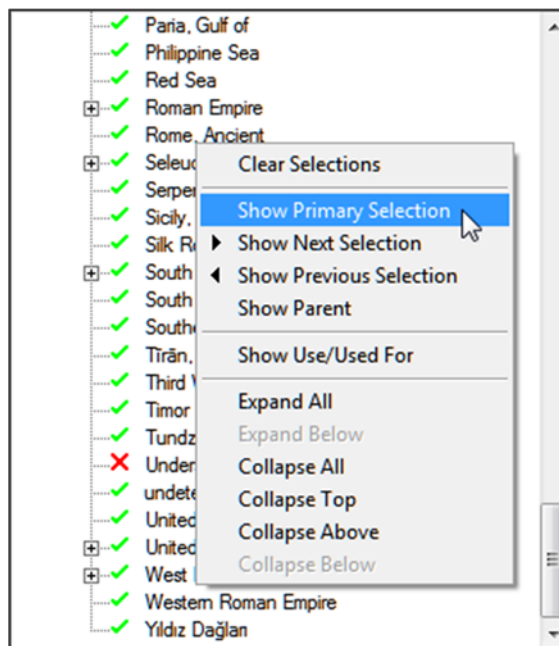
The menu options are:

Menu option	Description
Clear Selections	Clears the selection of any and all selected terms.
Show Primary Selection	Locate and display the term that is the <i>primary selection</i> . This option is useful if you have scrolled away from the <i>primary selection</i> term in the Browse View. Right-click anywhere in the Browse View and select Show Primary Selection to locate the <i>primary selection</i> term in the Browse View. In this example the <i>primary selection</i> (<code>ions</code>) is not displayed in the Browse View. Right-click anywhere in

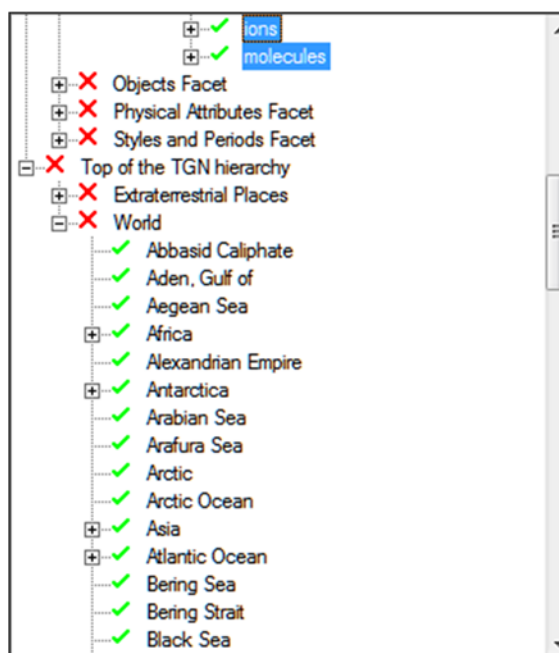
Menu option

Description

the Browse View and select **Show Primary Selection**:



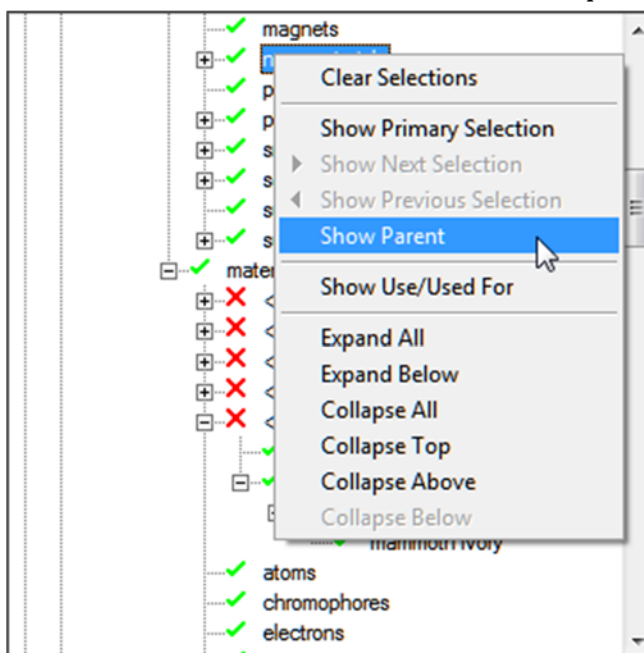
ions is located and displayed at the top of the Browse View:

**Show Next Selection**

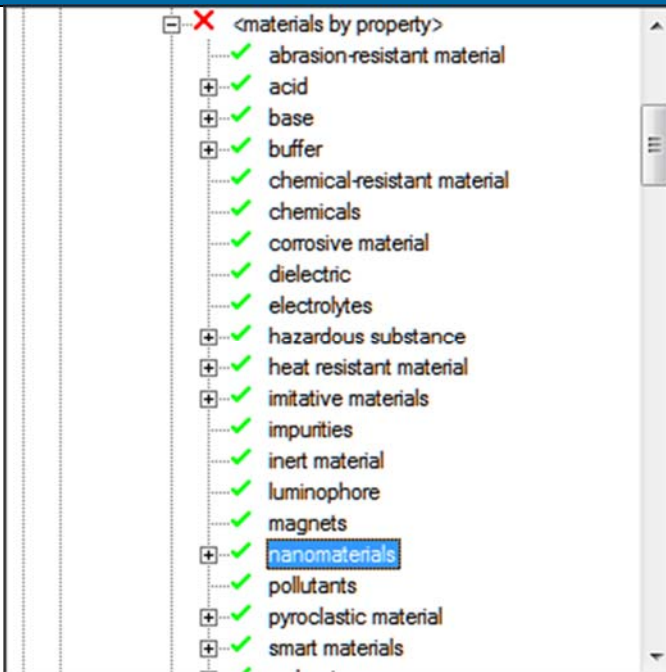

Move to the next selected term and make it the *primary selection*.

In the example above, *ions* is the *primary selection*. Right-click anywhere in the Browse View and select

Menu option	Description
	<p>Show Next Selection to make molecules the <i>primary selection</i>.</p> <p>If you were to select Show Next Selection again, the <i>primary selection</i> would loop back to the first selected term, atoms in this case.</p>
Show Previous Selection	<p>Move to the previous selected term and make it the <i>primary selection</i>.</p> <p>In the example above, ions is the <i>primary selection</i>. Right-click anywhere in the Browse View and select Show Previous Selection to make atoms the <i>primary selection</i> and display its details in the main module window.</p> <p>If you were to select Show Previous Selection again, the <i>primary selection</i> would loop back to the last selected term, molecules in this case.</p>
Show Parent	<p>Right-click a child term to reveal its immediate parent term. The parent term is displayed at the top of the Browse View.</p> <p>When we select Show Parent in this example:</p>

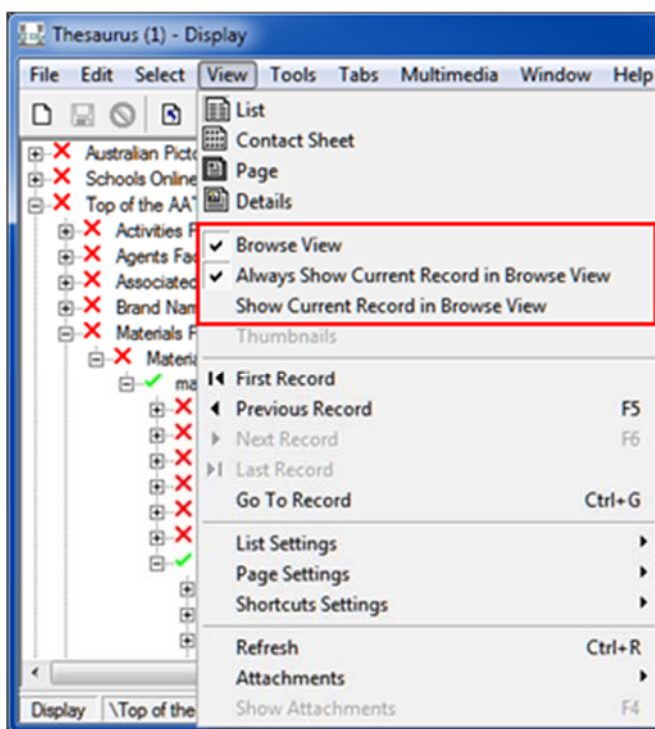


the parent for nanomaterials will display at the top of the Browse View:

Menu option	Description
	
Show Use/Used For	<p>Select to show / hide the display of <i>Use</i> and <i>Used For</i> terms. Simultaneously toggles the display of <i>Use</i> and <i>Used For</i> terms on the Hierarchy View tab.</p> <p>See <i>Hierarchy View Tab</i> (page 11) for details.</p>
Expand All	<p>Expand all terms that have previously been expanded.</p> <div data-bbox="712 1215 1485 1419">  <p>Only previously expanded terms are expanded because a thesaurus can contain more terms than can be loaded and displayed in the Browse View in a reasonable length of time.</p> </div>
Expand Below	Expand the right-clicked term to reveal its immediate child terms.
Collapse All	Collapse all expanded terms.
Collapse Top	Collapse the hierarchy to the highest level of the term that is right-clicked.
Collapse Above	Collapse the hierarchy to the immediate parent term of the term that is right-clicked.
Collapse Below	Collapse any children terms of the term that is right-clicked

View menu options

The View menu has a number of options specific to the Browse View:



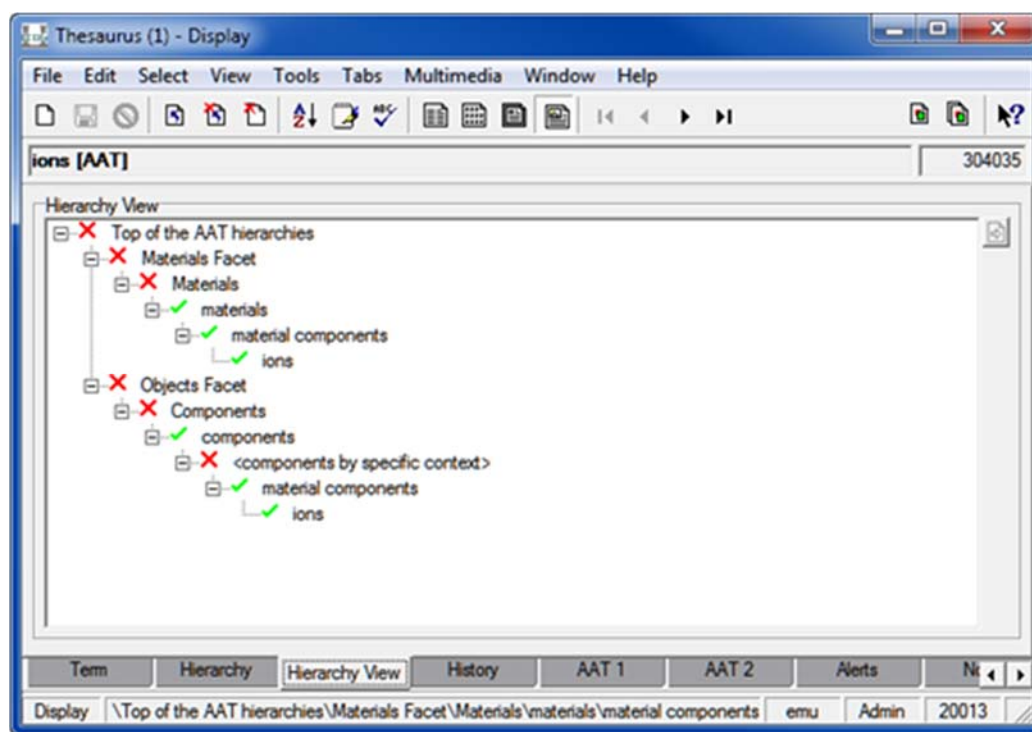
Menu option	Description
Browse View	Show/hide the Browse View panel.
Always Show Current Record in Browse View	<p>While this option is enabled (as shown above), as the current record changes in the main module window (e.g. by clicking a row in List View, or navigating through records in Details View), the term for the current record will be located and shown in the Browse View hierarchy and will become the <i>primary selection</i>.</p> <p>Select again to turn off this feature (removing the tick from beside the menu option).</p> <p>If the term appears in multiple branches in the Browse View hierarchy, each instance of the term will be selected.</p>

Menu option	Description
Show Current Record in Browse View	<p>When clicked, the term for the current record in the main module window will be located and shown in Browse View and will become the <i>primary selection</i>.</p> <p>If the term appears in multiple branches in the Browse View hierarchy, each instance of the term will be selected.</p> <p>This option is also available by right-clicking a row in List View.</p>

SECTION 2

Hierarchy View tab

The Hierarchy View tab displays the expanded thesaurus hierarchy for the term of the current record. In this example, we see the full hierarchy of the *ions* term:



The Hierarchy View tab provides a visual representation of the hierarchy of a single term in a thesaurus. As such the Hierarchy View tab:

- Does not display the current term's child terms
- AND-
- Only displays *Use* and *Used for* terms for the current term.

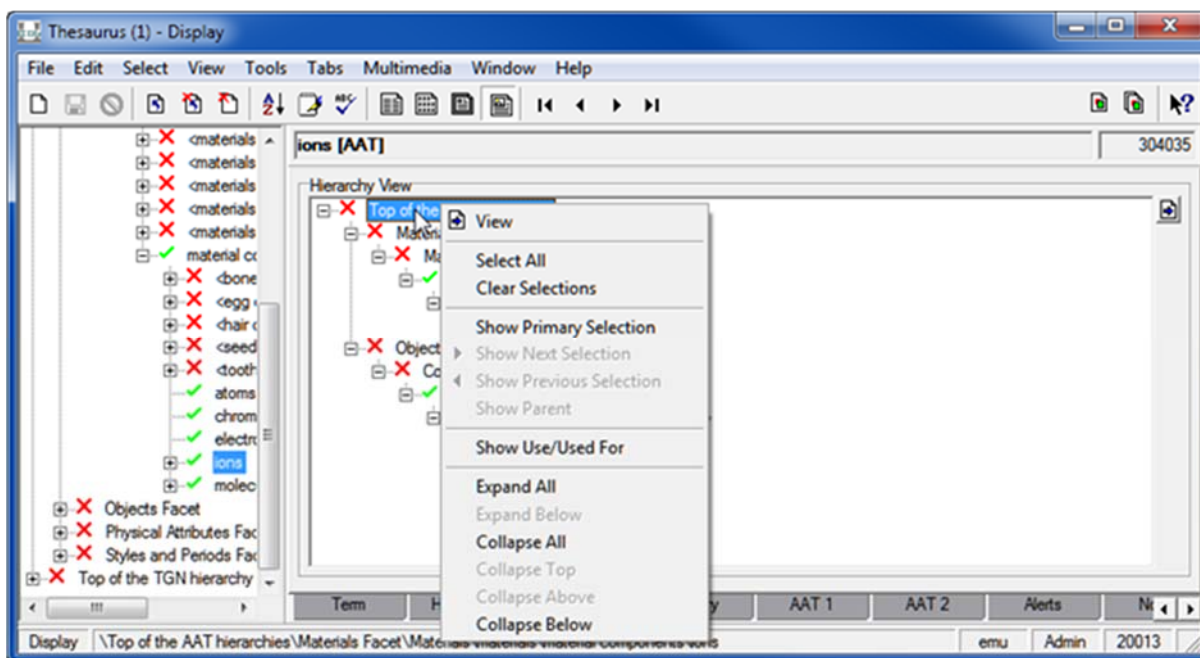


The Browse View does provide these two features.

As with the Browse View, multiple terms can be selected on the Hierarchy View tab using the Control (^) or Shift (⇧) keys while clicking with the mouse.

Hierarchy View right-click menu options


Right-click the Hierarchy View to display a menu with options for interacting with a term and, more generally, the hierarchy:

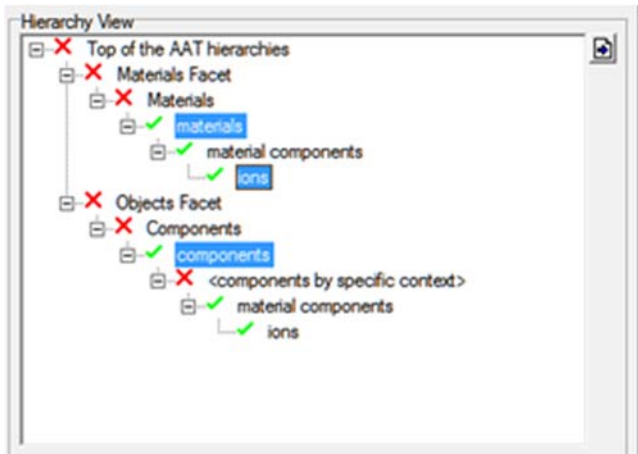


If an option is grayed out, it is not currently valid.

It is not necessary to click a specific term in order to access the Browse View menu (you can click anywhere in the Browse View to access the menu); however some options are only valid when right-clicking a term.

The menu options are:

Menu option	Description
View	Select View (or use the  button) to open another instance of the Thesaurus module and display details of the selected term(s).
Select All	Selects all terms on the Hierarchy View tab.
Clear Selections	Clear the selection of terms on the Hierarchy View tab.
Show Primary Selection	Locate and display the term that is the <i>primary selection</i> (page 3). This option is useful if you have scrolled away from the <i>primary selection</i> term on the Hierarchy View

Menu option	Description
Show Next Selection	<p>tab. Right-click anywhere in the Hierarchy View and select Show Primary Selection to locate the <i>primary selection</i> term on the Hierarchy View tab.</p> <p>Move to the next selected term and make it the <i>primary selection</i>.</p> <p>When several terms have been selected this option makes the next selected term the <i>primary selection</i>. In the following example, <i>ions</i> is the <i>primary selection</i>. Right-click anywhere in the Hierarchy View and select Show Next Selection to make <i>Components</i> the <i>primary selection</i>:</p>  <p>If you were to select Show Next Selection again, the <i>primary selection</i> would loop back to the first selected term, <i>materials</i> in this case.</p>
Show Previous Selection	<p>Move to the previous selected term and make it the <i>primary selection</i>.</p> <p>When several terms have been selected this option makes the previous selected term the <i>primary selection</i>. In the example above, <i>ions</i> is the <i>primary selection</i>. Right-click anywhere in the Hierarchy View and select Show Previous Selection to make <i>materials</i> the <i>primary selection</i>.</p> <p>If you were to select Show Previous Selection again, the <i>primary selection</i> would loop back to the last selected term, <i>components</i> in this case.</p>
Show Parent	<p>Right-click a child term to reveal its immediate parent term. The parent term is displayed at the top of the Hierarchy View.</p>

Menu option	Description
Show Use/Used For	Select to show / hide the display of <i>Use</i> and <i>Used For</i> terms. Simultaneously toggles the display of <i>Use</i> and <i>Used For</i> terms on the Browse View panel.
Expand All	Expand all terms.
Expand Below	Expand the right-clicked term to reveal immediate child terms.
Collapse All	Collapse all expanded terms.
Collapse Top	Collapse the hierarchy to the top-level of the term that is right-clicked.
Collapse Above	Collapse the hierarchy to the immediate parent of the term that is right-clicked.
Collapse Below	Collapse any children terms of the term that is right-clicked

Index

B

Browse View • 1

Browse View right-click menu options • 3, 4

H

Hierarchy View right-click menu options • 12

Hierarchy View tab • 1, 3, 8, 11

T

The primary selection • 3, 12

V

View menu options • 9